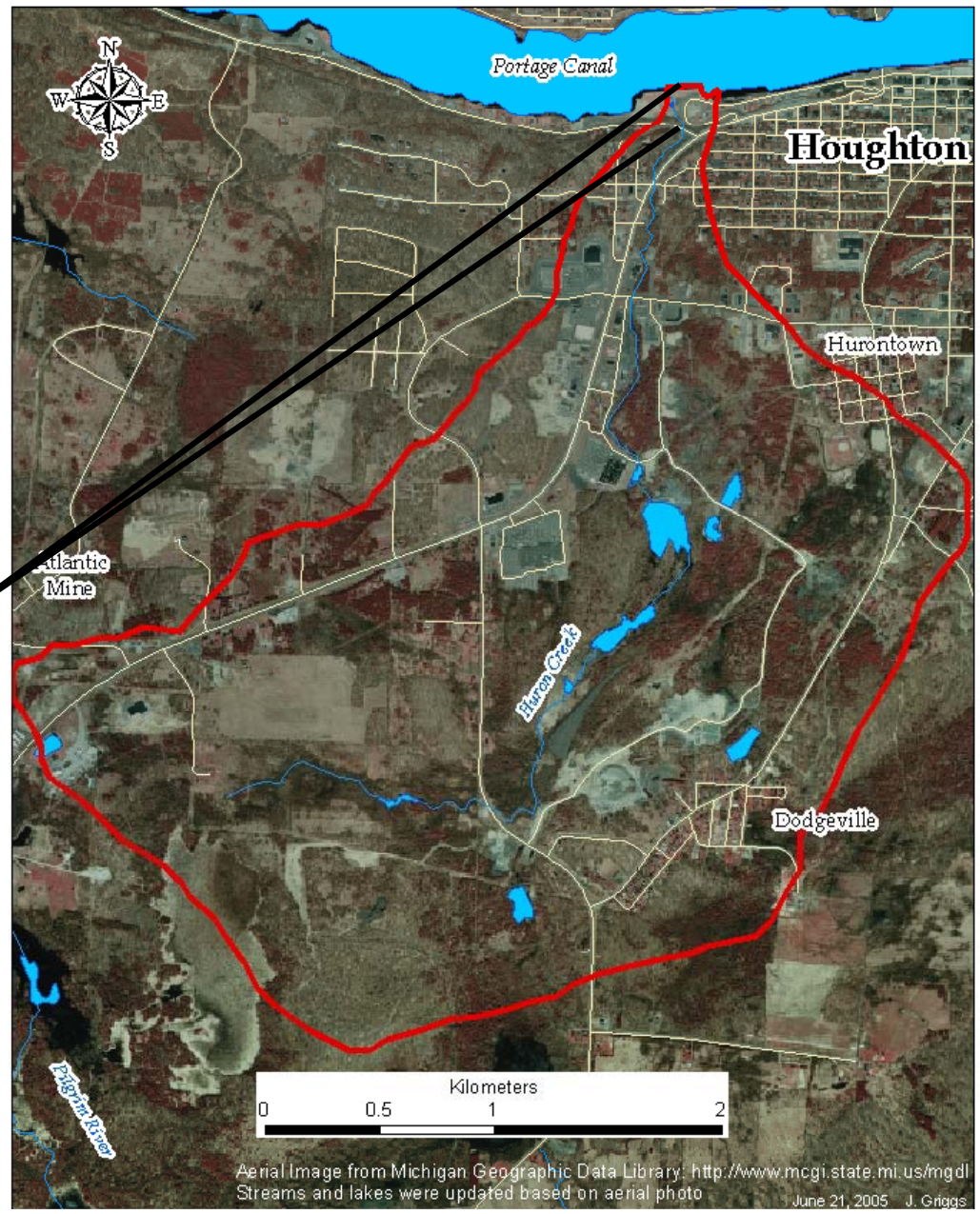
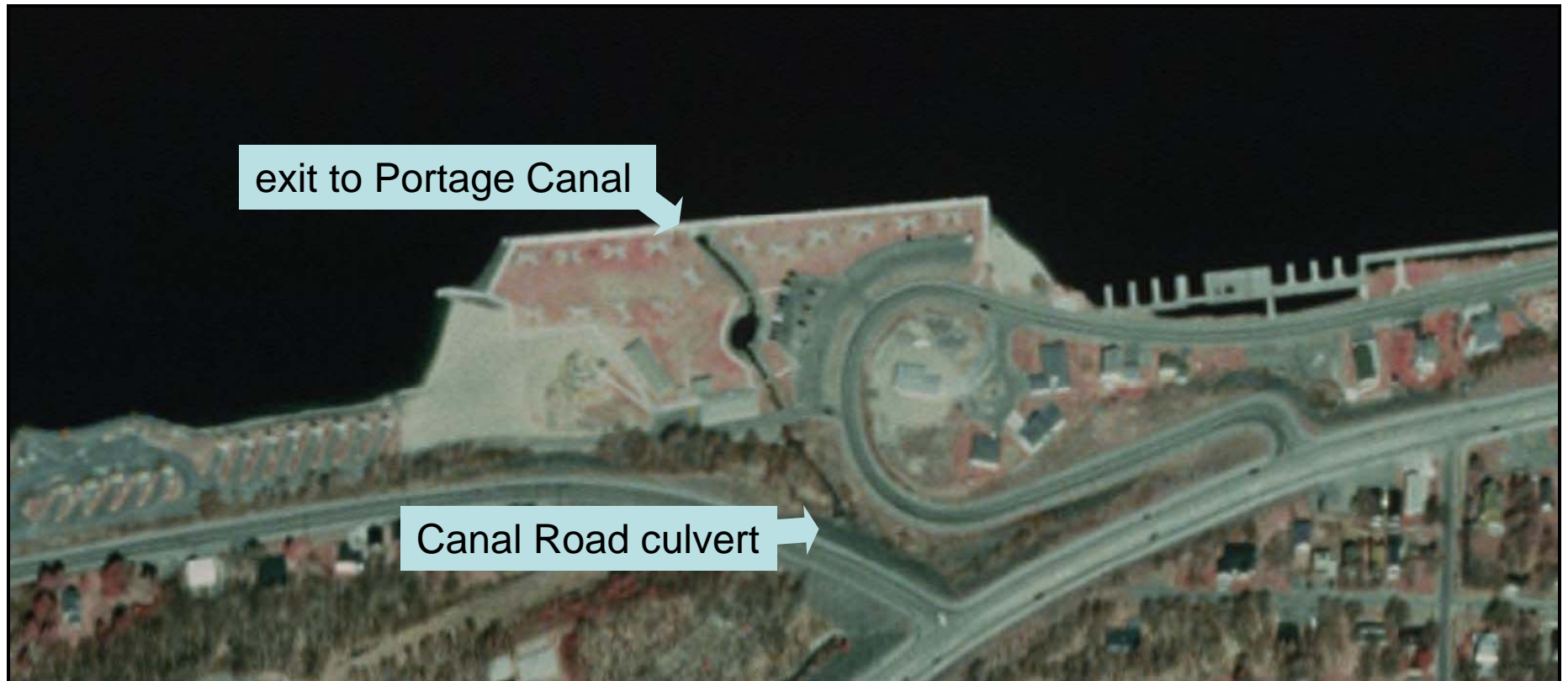


“State of the Stream Segment”

Portage Canal to Canal Road



Prepared by Alex Mayer, 8/22/06



Desired attributes

- visually attractive
- habitat for a healthy ecosystem
- opportunities for human interactions
- water quality
- community education





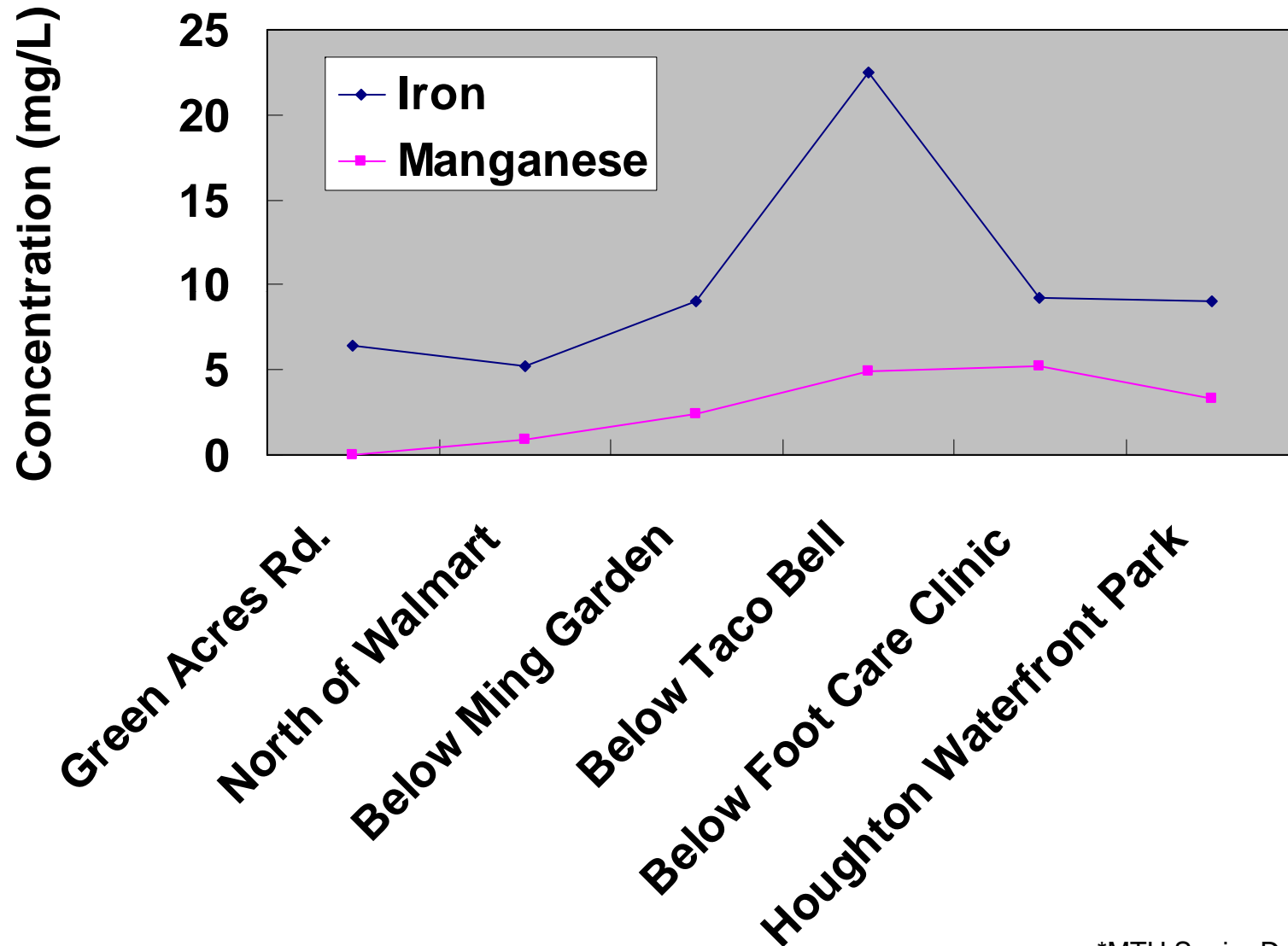








Water Quality: Iron and Manganese*



Water Quality: Coliforms

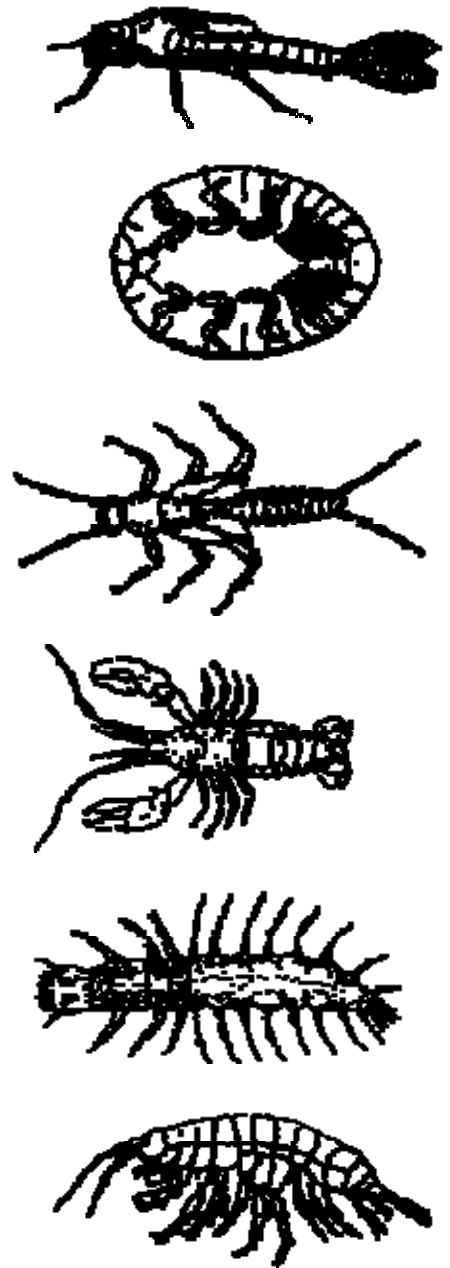
- The Western Upper Peninsula District Health Department (WUPHD) collects water samples at Houghton Beach weekly during the summer
- The samples are analyzed for E. coli bacteria levels, which are a “marker” for other harmful pathogens that may cause gastrointestinal illnesses for swimmers if they ingest water.
- E. Coli in excess of prescribed levels of safety for swimming ***have not been found*** at Houghton Beach.*
- Sampling from Huron Creek upstream of bridge leading to campground also found acceptable levels of fecal coliform.**

*between 6/14/03 and 8/14/06; source: <http://www.deq.state.mi.us/beach/public/site.aspx?SiteID=1411&tab=TestResults&ResultCount=all>

**11/28/05; source: MTU Senior Design group

Macro-invertebrate Community Assessment*

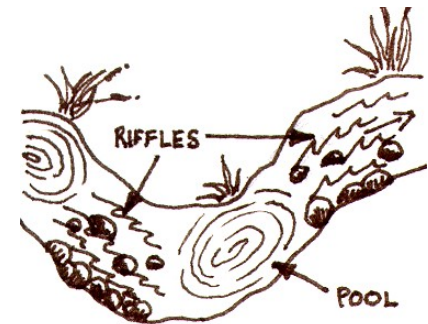
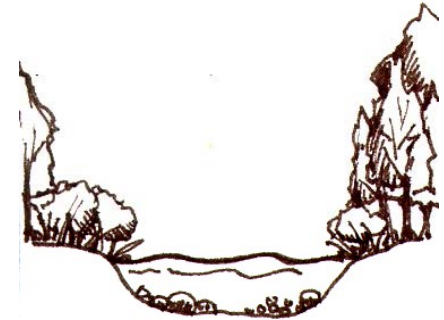
- Assessments conducted upstream of bridge to campground generally result in a “fair” to “poor” rating.



*source: Western Upper Peninsula Center and Houghton Middle School

Habitat evaluation*

- Evaluations generally have resulted in “fair” ratings.



*source: Western Upper Peninsula Center

Vision Statement

For guiding the Watershed Management Plan

- We desire a watershed and stream that . . .
 - is visually attractive, can be seen wherever possible, and includes a stream-side vegetation buffer that is visible on the landscape;
 - provides habitat for a healthy ecosystem within an urban setting;
 - provides opportunities for human interactions with the stream ecosystem, with the Houghton Waterfront park and the former Huron Lake being prime sites for interaction;
 - has water quality that is consistent with the previous three goals;
 - provides opportunities for community education (including schools, business owners, and the public in general) on the importance of healthy watersheds and in the historical uses of this particular watershed, with interpretive signs at sites of interaction being one possible form of education.

Stream Assessment:

Saturday, August 26, 9 am – 12 pm

- Handout
- Stations/timing:
 - 1) 9 AM - Green Acres Road
 - 2) 10 AM - Taco Bell
 - 3) 11 AM - Kestner Park
 - 4) 11:45 AM - comparison of data from 3 stations
- At each station, we will monitor
 - 1) biological diversity of benthic macroinvertebrates,
 - 2) water chemistry
 - 3) stream habitat assessment
- We will divide into sub-groups; each sub-group will have a chance to do each of the monitoring categories.